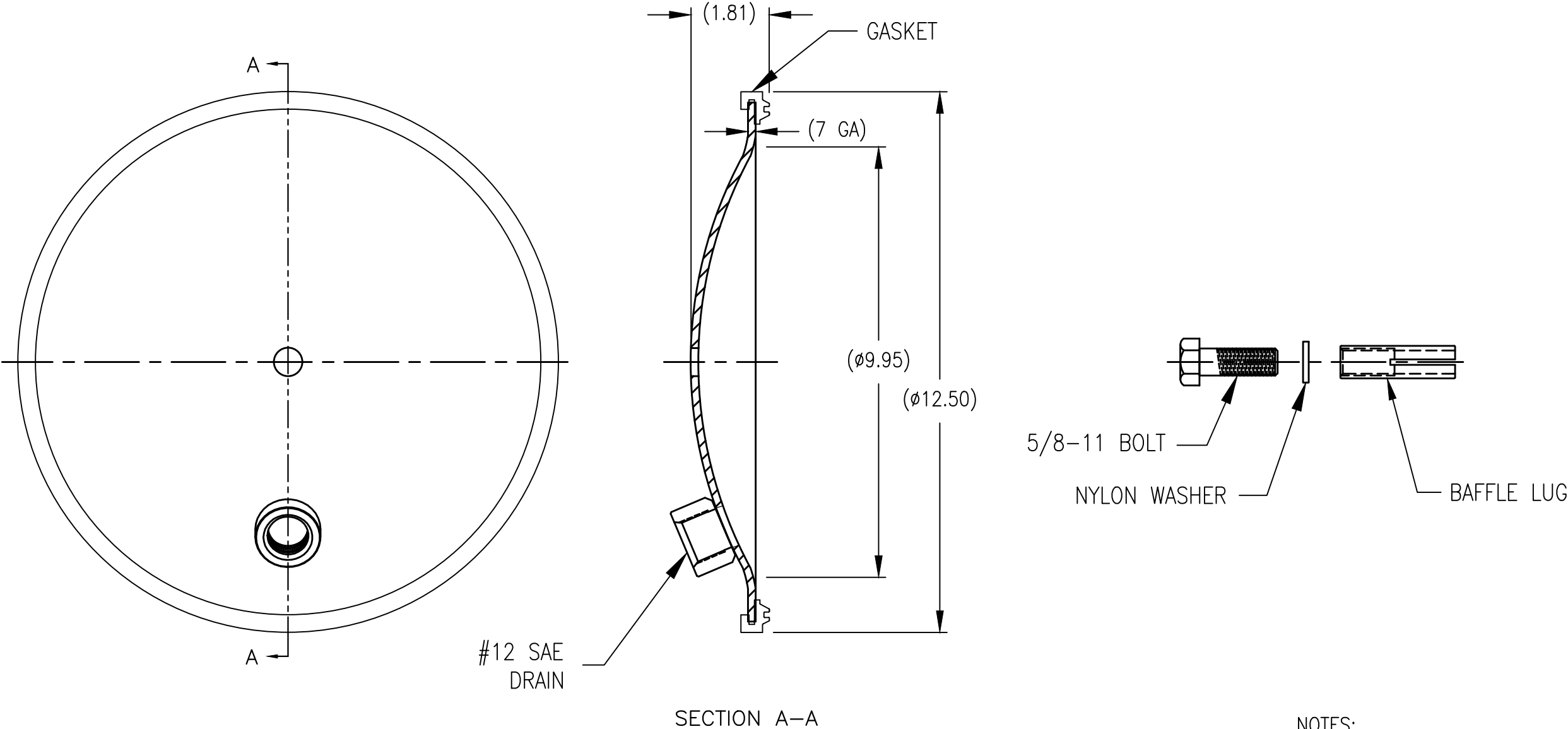


- NOTES:
- 1. OPERATING TEMPERATURE IS 180° F MAXIMUM. FOR HIGHER TEMPERATURES CONSULT FACTORY.
  - 2. RECOMMENDED ASSEMBLY TORQUE: ENDCOVER (15 FT LB), SIGHT GLASS (60 IN LB)



- NOTES:
- 1. USED WITH 10" ACCESS HOLE DIAMETER

THIS DOCUMENT CONTAINS INFORMATION PROPRIETARY TO LDI Industries, Inc. AND IS FURNISHED UPON THE EXPRESS CONDITION THAT THE INFORMATION CONTAINED HEREIN WILL NOT BE DISCLOSED TO ANY THIRD PARTY OR USED DIRECTLY OR INDIRECTLY IN ANY WAY DETRIMENTAL TO THE INTEREST OF LDI Industries, Inc.



TITLE ENDCVRKIT\_12"-#12SAEDRN\_STL LDI STANDARD

DWG NO./ITEM NO. 5054-D

				MATERIAL	STEEL	TOLERANCES UNLESS OTHERWISE SPECIFIED	
				FINISH	SEE NOTES	( ) REFERENCE DIMENSIONS	
				NOM WT (LBS.)	8.0	SCALE 3/8	DO NOT SCALE DRAWING
REV	DATE	ECN NO.	BY			DRWN RJB	DATE 5/4/12
						CHKD -	DATE -
						SHT 1/1	REV -